

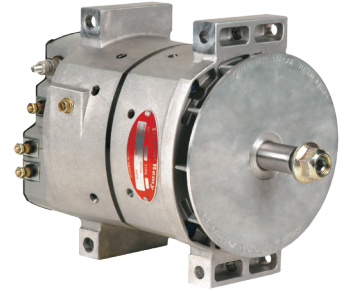


GENUINE PRODUCTS

Spec it Right: Peterbilt

36SI™

- **Output:** 12 Volts 160/165 Amps - 100 Amps at idle
- **Highest output at low RPM:** Manages heavy electrical loads at low RPM preventing premature battery discharge
- **Remote Sense:** Drastically reduce battery charge time
- **Brushless durability:** 13 fewer moving parts than a brush-type alternator, eliminating components that wear out while extending product life
- **Warranty:** 3 years/350,000 miles



36SI OPTION CODE

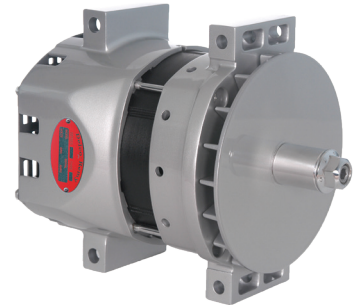
2511490

2511400 Non-R/S

* Special Quote

40SI™

- **Output:**
12 Volts 240 Amps - 160 Amps at idle
12 Volts 275 Amps - 180 Amps at idle
12 Volts 300 Amps - 190 Amps at idle
12 Volts 320 Amps - 190 Amps at idle
- **Highest output at low RPM:** Manages heavy electrical loads at idle preventing premature battery discharge
- **Remote Sense:** Drastically reduce battery charge time
- **Brushless durability:** 13 fewer moving parts than a brush-type alternator, eliminating components that wear out while extending product life
- **Longer system life:** Over spec'ing extends life of alternator
- **Efficiency and power density:** Highest combination in its class, providing substantial fuel savings
- **Warranty:** 3 years/350,000 miles



40SI OPTION CODES

240 Amp: 2511480*

275 Amp: 2512100

300 Amp: 2512120

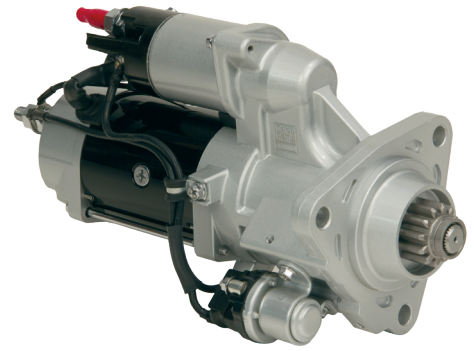
320 Amp: 2511470*

* Special Quote

Spec it Right: Peterbilt

38MT+™

- **Tested and approved for all MX engines**
- **Power:** 4.3kW peak at 12V
- **Over Crank Protection:** A built-in circuit breaker, protects the starter from thermal damage, automatically resetting at a safe operating temperature
- **Design refinements** for optimal performance
- **Integral Magnetic Switch (IMS)** reduces voltage drop and ensures the solenoid receives the maximum available voltage in any starting condition.
- **Improved starter pinion engagement:** Redefined electrical soft start reduces wear-and-tear by slowly rotating the pinion until it properly engages into the ring gear before cranking.
- **Warranty:** Integrated OCP model: 3 years/350,000 miles



38MT+ OPTION CODE

2522040

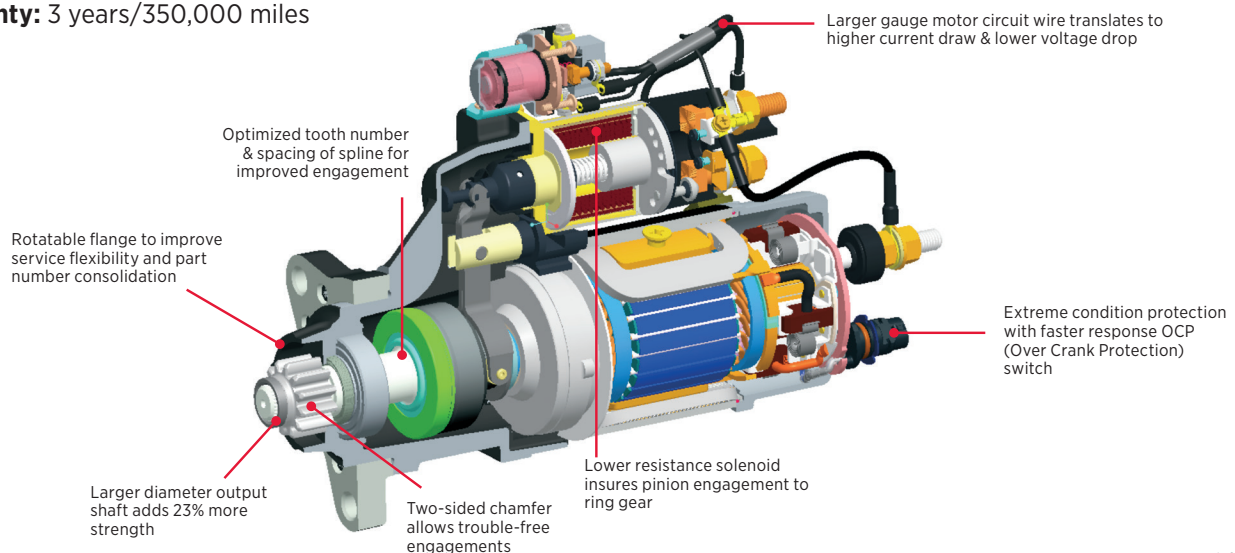
39MT™

- **Over Crank Protection:** A built-in circuit breaker, protects the starter from thermal damage, automatically resetting at a safe operating temperature
- **Design refinements** for optimal performance
- **Improved starter pinion engagement:** Redefined electrical soft start reduces wear-and-tear by slowly rotating the pinion until it properly engages into the ring gear before cranking.
- **Warranty:** 3 years/350,000 miles



39MT OPTION CODE

2522010* (Cummins)



* Special Quote

delcoremy.com



GENUINE PRODUCTS

BorgWarner Inc.
600 Corporation Drive
Pendleton, IN 46064 USA
For Customer Service or Technical
Assistance call 1-800-372-3555

Delco Remy is a registered trademark of General Motors Corporation
licensed to BorgWarner PDS (Anderson) L.L.C. | F100P | 8-21