



GENUINE PRODUCTS

# Spec it Right: Western Star

## 28SI™

- **Output:** 12 Volts 200 Amps - 140 Amps at idle
- **Dual Internal Fans:** Provides maximum cooling
- **Remote Sense:** Drastically reduce battery charge time
- **Warranty:** 2 years/250,000 miles

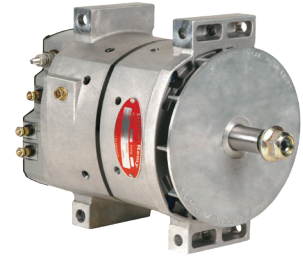


28SI OPTION CODE

124-1E1

## 36SI™

- **Output:** 12 Volts 160/165 Amps - 100 Amps at idle
- **Highest output at low RPM:** Manages heavy electrical loads at low RPM preventing premature battery discharge
- **Remote Sense:** Drastically reduce battery charge time
- **Brushless durability:** 13 fewer moving parts than a brush-type alternator, eliminating components that wear out while extending product life
- **Warranty:** 3 years/350,000 miles

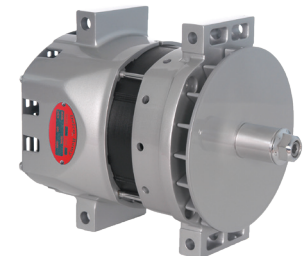


36SI OPTION CODE

124-1DJ

## 38SI™ & 40SI™

- **Output:**  
38SI: 12 Volts 215 Amps - 121 Amps at idle  
40SI: 12 Volts 240 Amps - 160 Amps at idle  
40SI: 12 Volts 275 Amps - 180 Amps at idle  
40SI: 12 Volts 300 Amps - 190 Amps at idle  
40SI: 12 Volts 320 Amps - 190 Amps at idle
- **Highest output at low RPM:** Manages heavy electrical loads at idle preventing premature battery discharge
- **Remote Sense:** Drastically reduce battery charge time
- **Brushless durability:** 13 fewer moving parts than a brush-type alternator, eliminating components that wear out while extending product life
- **Longer system life:** Over spec'ing extends life of alternator
- **Efficiency and power density:** Highest combination in its class, providing substantial fuel savings
- **Warranty:** 3 years/350,000 miles



38SI OPTION CODE

24-1G3

40SI OPTION CODES

240 Amp: 124-1E8

275 Amp: 124-1E7

300 Amp: 124-1G1

320 Amp: 124-111

# Spec it Right: Western Star

## 39MT™

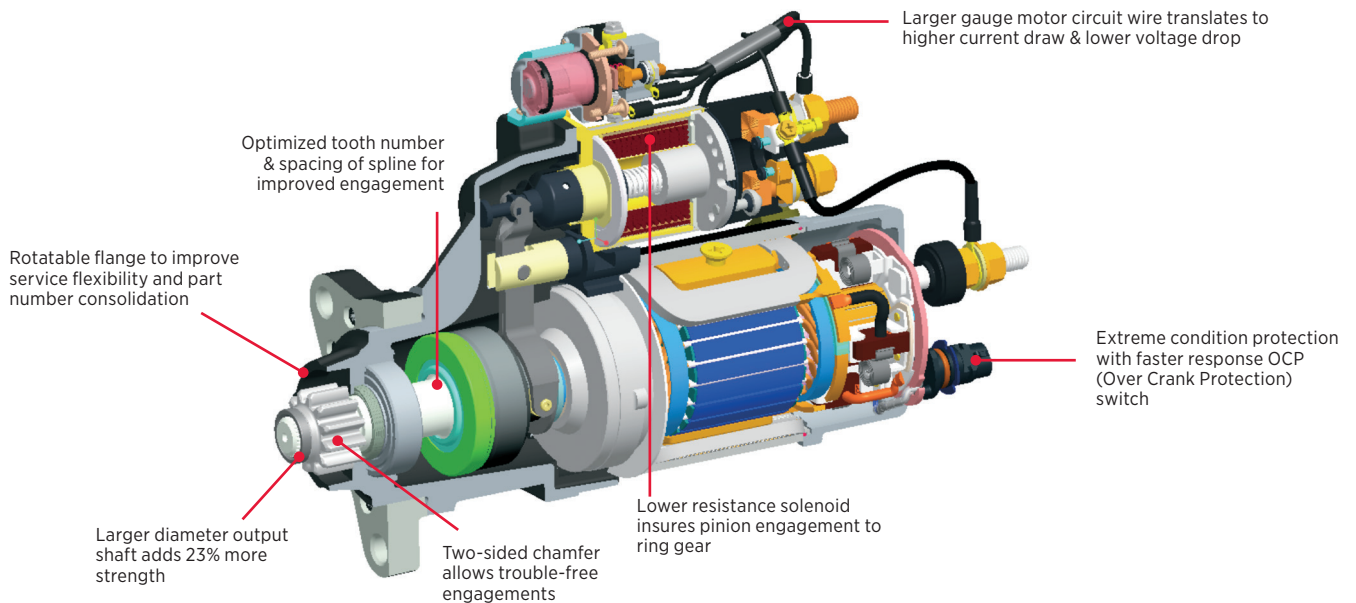
- **Over Crank Protection:** A built-in circuit breaker, protects the starter from thermal damage, automatically resetting at a safe operating temperature
- **Design refinements** for optimal performance
- **Improved starter pinion engagement:** Redefined electrical soft start reduces wear-and-tear by slowly rotating the pinion until it properly engages into the ring gear before cranking.
- **Warranty:** 3 years/350,000 miles



### 39MT OPTION CODES

155-055 (Cummins)

155-074 Standard Position (DD 13/15/16)



[delcoremy.com](http://delcoremy.com)



BorgWarner Inc.  
600 Corporation Drive  
Pendleton, IN 46064 USA  
For Customer Service or Technical  
Assistance call 1-800-372-3555

Delco Remy is a registered trademark of General Motors Corporation  
licensed to BorgWarner PDS (Anderson) L.L.C. | F100WS | 8-21